



Transition Pathway Repository

A Tool to Build Transition Intelligence

December 12, 2025



- **Welcome & introduction**
- **How transition pathways enable transition intelligence**
- **Introducing the Transition Pathways Repository**
- **Q&A**

RMI is an independent, non-partisan, nonprofit organization of experts accelerating the clean energy transition. We are transforming the global energy system to secure a clean, prosperous, zero-carbon future for all.



Transforming
how we produce
and use energy...

A Bold Goal:

1.5°C
↓50% CO₂
BY 2030

To power key sectors...



Carbon-
Free
Industry



Carbon-
Free
Mobility



Carbon-
Free
Buildings



Carbon-
Free
Electricity

Accelerated by market catalysts...



Policy



Finance



Business
Models



Data &
Transparency



Technology



Education
& Capacity

Across critical global geographies.



Cities



China



India



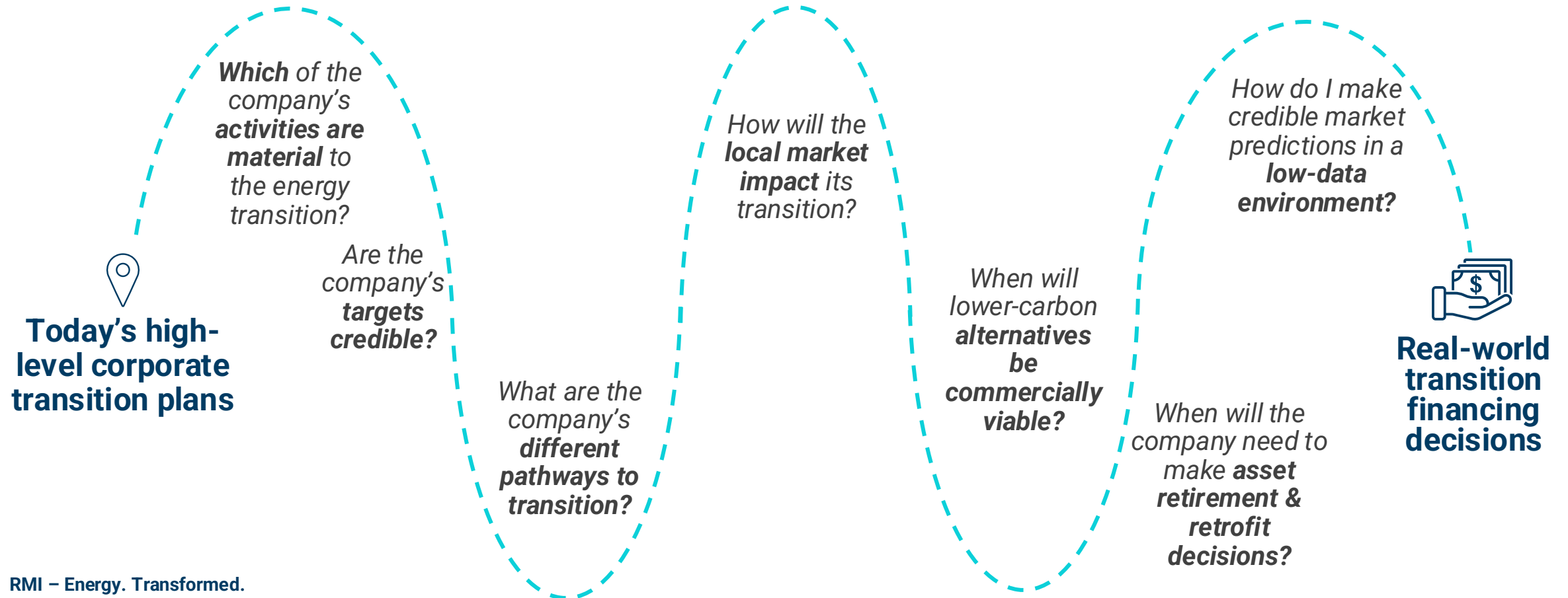
U.S.



Developing
Economies

Transition assessments often don't give financiers what they need

Financial institutions need more nuanced analysis of company transitions to assess risks and unlock opportunities



Transforming corporate transition assessments with three key improvements

These critical aspects of transition assessments are key to revealing decision-useful insights, but are under-utilized due to resource constraints and lack of understanding

Transition Footprint Mapping



An assessment of company assets, activities, and operations facilitates **understanding of transition exposure at a granular level**. This enables FIs to focus on high-impact assets and tailor their engagement to specific areas of opportunity or concern.

Alignment of Planned Investments



A comparison of forward-looking investment pipelines with stated targets and external benchmarks **reveals whether companies are on track** and identifies risks or opportunities for intervention.

Dependency Mapping



An analysis of external constraints—such as technology readiness, market conditions, and policy support—clarifies the **real-world feasibility of corporate plans** and highlights potential barriers or dependencies.

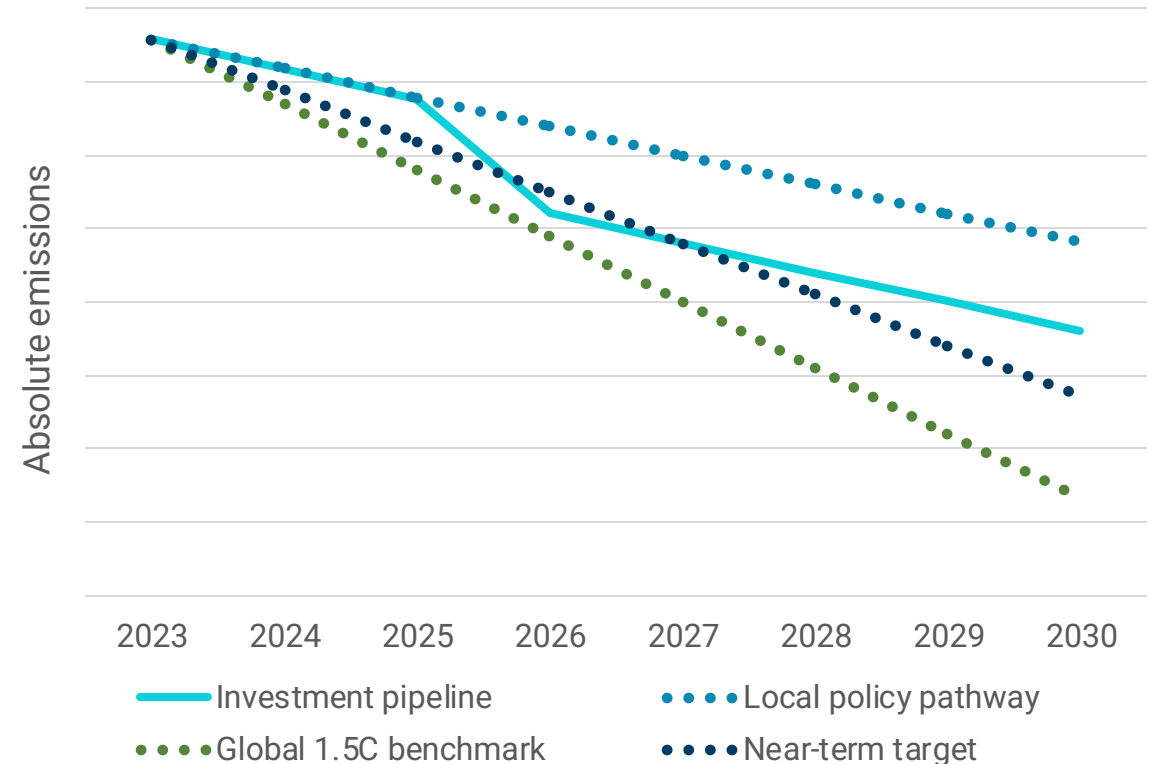
Transition pathways are a critical input to rigorous transition assessments

Pathways help contextualize the ambition and feasibility of corporate plans, highlight critical technologies, and reveal key drivers of the transition

Transition pathways offer forward-looking views of how sectors or regions may evolve — from detailed models to simple policy targets.

No single pathway gives all the answers. Using multiple pathways provides stronger, more actionable insights. They help answer:

- How policy or markets influence deployment of key technologies
- Whether the company's plans are realistic given regional context
- How credible a company's climate commitments are



RMI's new Transition Pathways Repository brings puts pathways at your fingertips

The repository improves clarity and reduces the barrier to making use of additional pathways



Expert overview

A clear description of the pathway, the core transition drivers it models, and its recommended uses for corporate transition assessments.



Standardized features

A summary of key features and assumptions, including geographic coverage, temperature alignment, energy efficiency assumptions, policy ambition, and technologies.



Metric visualizations

Visualizations of available metrics such as technology mix and emissions intensity trajectory.

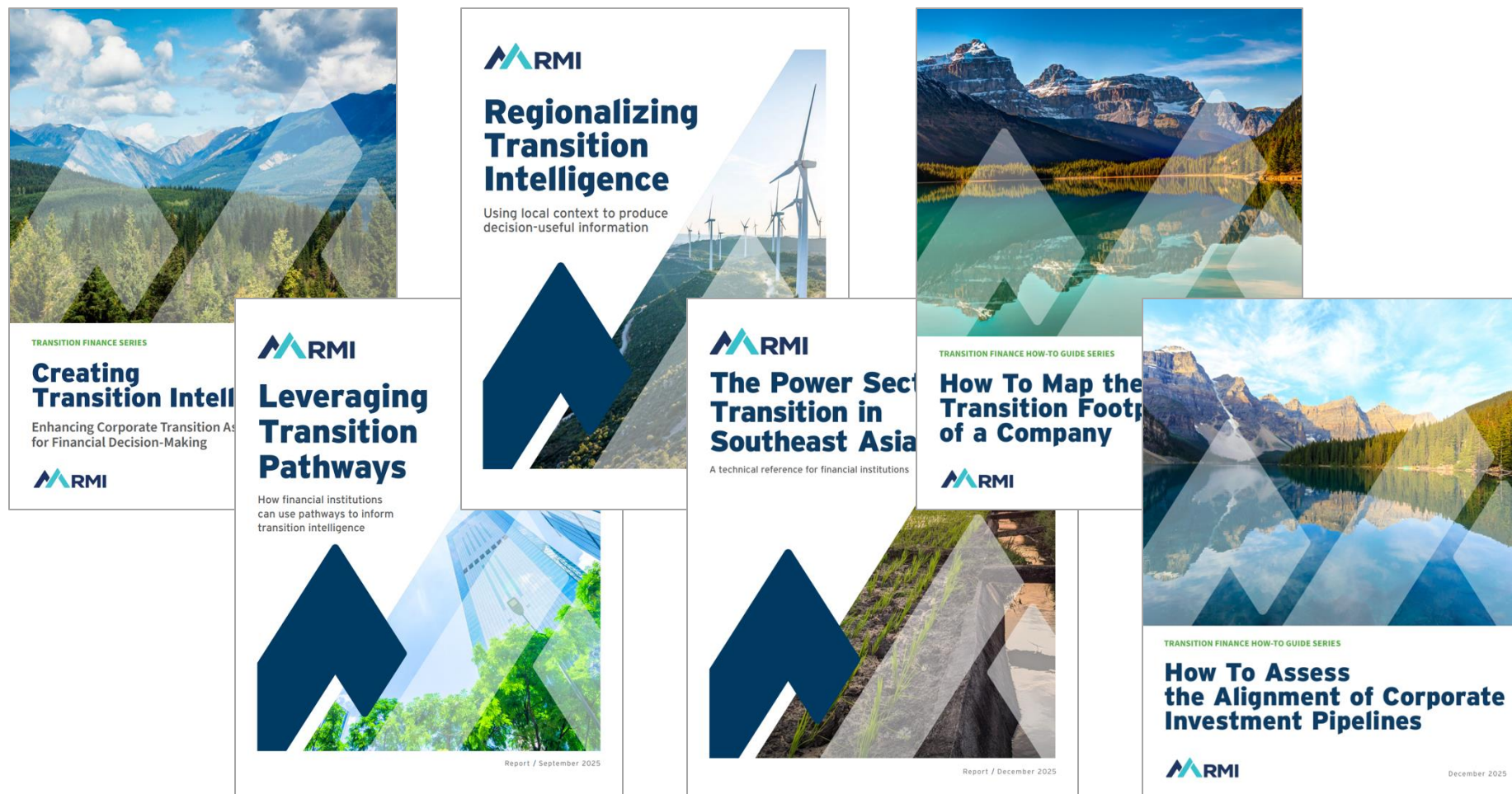


Benchmark data

Standardized, downloadable datasets for key benchmark metrics derived from the pathway where available. Links to the original data sources.

Transition intelligence resources

RMI has published six resources this year in addition to the pathway repository



<https://rmi.org/transitionfinance>

What's next? Expanding the pathway repository in 2026



Expand pathway repository geographies



Expand pathway repository sectors

*RMI will be **expanding the repository's coverage in 2026, moving into new sectors and geographies***

We are looking for feedback on both the functionality and the coverage of this tool. **Try it out and let us know what you think at:**

tomwhite@rmi.org

nherrera@rmi.org



Q&A

